



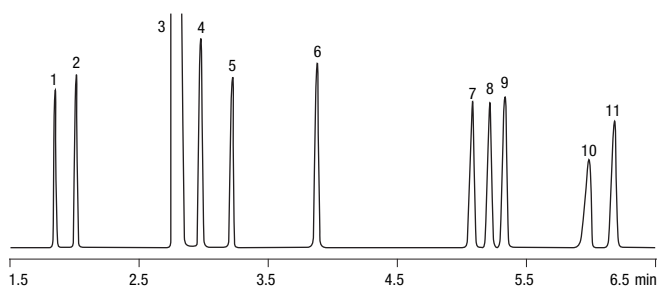
ZB-WAX GC Columns

- **Temperature Limits: 40 to 250/260 °C (Isothermal/TPGC)**
- **Low bleed, MS certified**
- **Highly stable, long lifetime**
- **Low activity for amines**
- **Bonded, solvent rinsible**
- **Excellent chromatography of polar complex mixtures**
- **Widely used for profiling and “fingerprinting”**
- **Close equivalent to USP Phase G16**

Applications			
Alcohols	OVIs	Aldehydes	Pharmaceuticals
Aromatics	Solvents	Essential oils	Styrene
Flavors / Fragrances	Xylenes	Glycols	Basic Compounds

Alternative to Any Polyethylene Glycol Phase:			
HP-INNOWax	Rtx-WAX	CP-Wax 57 CB	007-CW
EC-Wax	Stabilwax-DB	Sol.Gel.-WAX	FAMEWAX
DB-WAXetr	Met-Wax	Omegawax	BP20

Column Profile



App ID 1-4895

BTEX in Under Six Minutes

- Column:** Zebbron ZB-WAX
- Dimensions:** 30 meters x 0.32 mm x 0.50 μm
- Part No.:** 7HM-G007-17
- Injection:** Split 20:1 @ 250 °C, 0.2 μL
- Carrier Gas:** Helium @ 2 mL/min (constant flow)
- Oven Program:** 60 °C to 75 °C @ 15 °C/min to 90 °C @ 3 °C/min for 3 min
- Detector:** FID @ 300 °C
- Sample:**
- | | |
|---------------------------------|-----------------|
| 1. Pentane | 7. Ethylbenzene |
| 2. Heptane | 8. p-Xylene |
| 3. Solvent (methylene chloride) | 9. m-Xylene |
| 4. Benzene | 10. Dodecane |
| 5. Decane | 11. o-Xylene |
| 6. Toluene | |

Ordering Information

ID (mm)	df (μm)	Temp. Limits °C	Part No.
10-Meter			
0.10	0.10	40 to 250/260	7CB-G007-02
15-Meter			
0.25	0.25	40 to 250/260	7EG-G007-11
0.32	0.25	40 to 250/260	7EM-G007-11
0.32	0.50	40 to 250/260	7EM-G007-17
0.53	1.00	40 to 250/260	7EK-G007-22
20-Meter			
0.18	0.18	40 to 250/260	7FD-G007-08

ID (mm)	df (μm)	Temp. Limits °C	Part No.
30-Meter			
0.25	0.15	40 to 250/260	7HG-G007-05
0.25	0.25	40 to 250/260	7HG-G007-11
0.25	0.50	40 to 250/260	7HG-G007-17
0.25	1.00	40 to 250/260	7HG-G007-22
0.32	0.15	40 to 250/260	7HM-G007-05
0.32	0.25	40 to 250/260	7HM-G007-11
0.32	0.50	40 to 250/260	7HM-G007-17
0.53	0.50	40 to 250/260	7HK-G007-17
0.53	1.00	40 to 250/260	7HK-G007-22

ID (mm)	df (μm)	Temp. Limits °C	Part No.
60-Meter			
0.25	0.15	40 to 250/260	7KG-G007-05
0.25	0.25	40 to 250/260	7KG-G007-11
0.32	0.50	40 to 250/260	7KM-G007-17
0.53	1.00	40 to 250/260	7KK-G007-22
ZB-WAX Test Mix			
Zebbron	ZB-WAX		AG0-5158



If you need a 5 in. cage, simply add a (-B) after the part number, e.g., 7HG-G007-11-B.



PROTECT YOUR GC COLUMN. TRY Z-GUARD WITH YOUR NEXT ZEBRON ORDER.